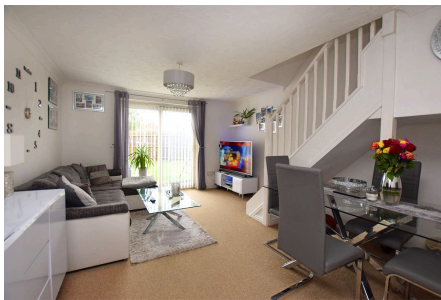




31 Wallace Close, King's Lynn PE30 4GD

£195,000

2 1 1



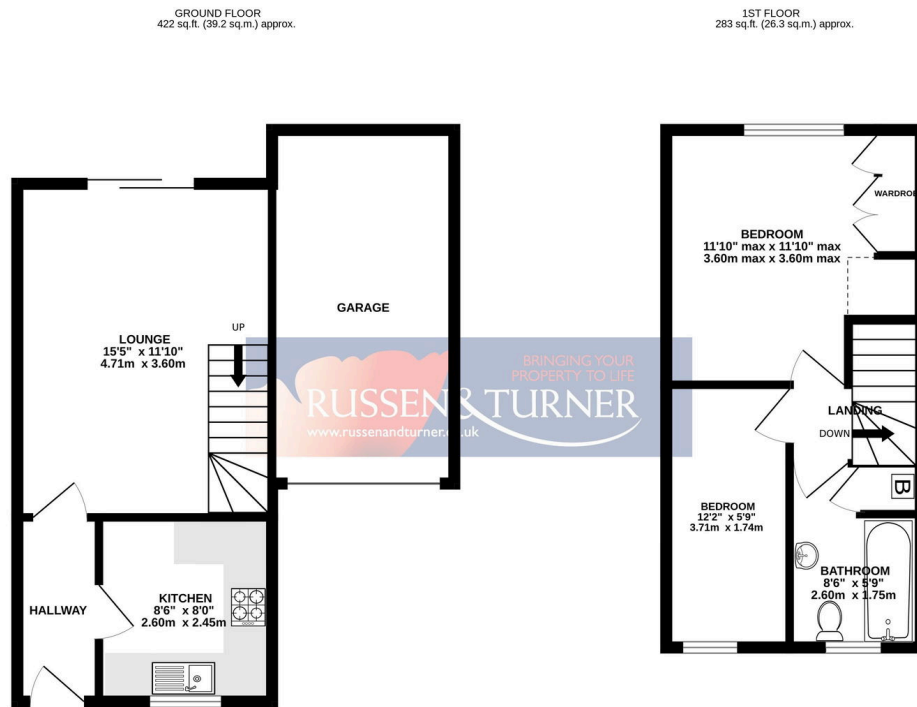
Located around half a mile from the QE Hospital and nicely set at the end of a cul-de-sac, sits this very well looked after, end-of-terrace home. The house overlooks an open green area with trees and would ideally suit those seeking their 1st home or perhaps someone looking for a 'buy-to-let' property.





Key Features

- End-terrace house
- Cul-de-sac
- Private parking
- Double glazed
- Ideal 1st time buyer home
- 2 Bedrooms
- Garage
- Gas central heating
- Overlooks green
- No chain



TOTAL FLOOR AREA : 705 sq.ft. (65.5 sq.m.) approx.

Whilst every attempt has been made to ensure the accuracy of the floorplan contained here, measurements of doors, windows, rooms and any other items are approximate and no responsibility is taken for any error, omission or mis-statement. This plan is for illustrative purposes only and should be used as such by any prospective purchaser. The services, systems and appliances shown have not been tested and no guarantee as to their operability or efficiency can be given.

Made with Metropix ©2024

